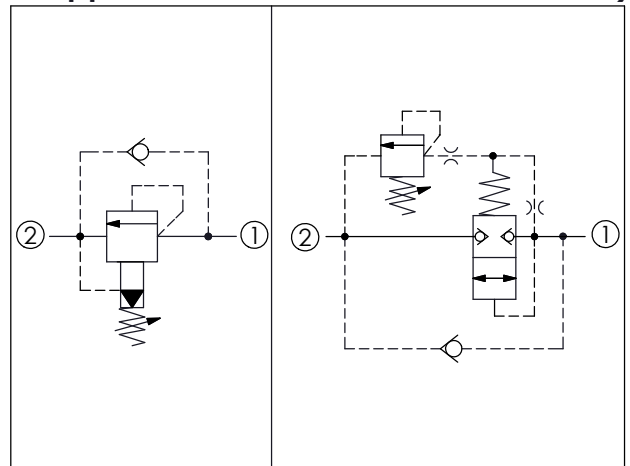


Ordering Code: **RC-10A-X-Y-Z**

UNIT:mm



TECHNICAL DATA

Max. Operating pressure: 350 bar

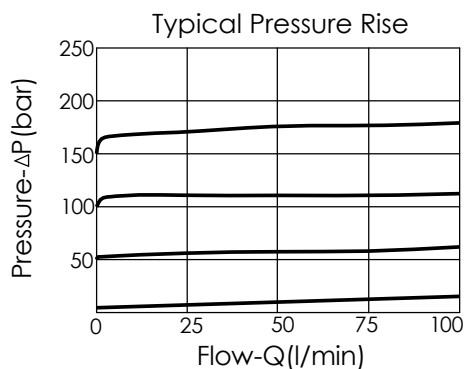
Rated flow: 95 l/min

Cavity-Tooling: 10A-2

Installation torque: 40-50 Nm

Weight: 0.15 kg

Will accept maximum pressure at port 2; suitable for use in cross port relief circuits.



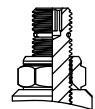
X OPERATION

2G Balanced Poppet

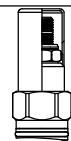
Response Time-Typical (7 ms)
Maximum Leakage (0.7 cc/min)

Z OPTIONS

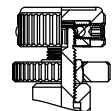
L Leakproof hex. socket screw.



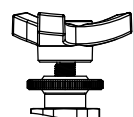
C Stainless Steel Tamper Resistant Cover.



K Handknob with Lock Knob.



T Three-winged Handknob Kit.



Y	SPRINGS	
	ADJUSTMENT RANGES	
A	7 to 210 bar	(70 bar Standard Setting)
B	3.5 to 105 bar	(70 bar Standard Setting)
C	10.5 to 420 bar	(70 bar Standard Setting)
D	1.7 to 55 bar	(28 bar Standard Setting)
E	1.7 to 28 bar	(14 bar Standard Setting)

※ Port ② to Port ① Cracking Pressure 0.3 bar