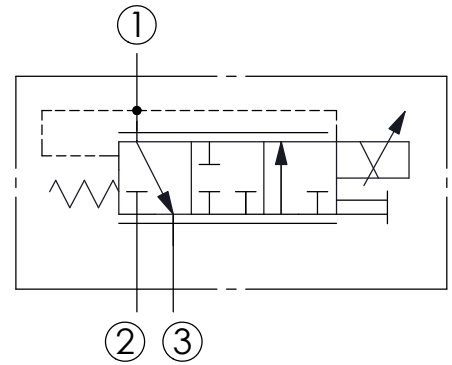
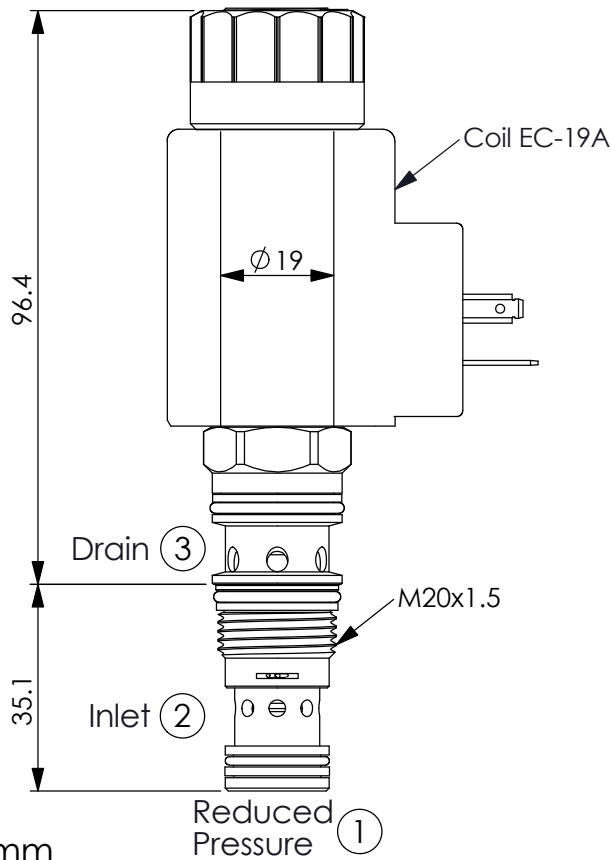


Ordering Code: **PPD-11A-X-Y-Z-74**

**PATENT PENDING**



### TECHNICAL DATA

Max. Operating pressure: 350 bar

Rated flow: 20 l/min

Cavity-Tooling: 11A-3

Installation torque: 40-50 Nm

Linearity (with dither) <2%

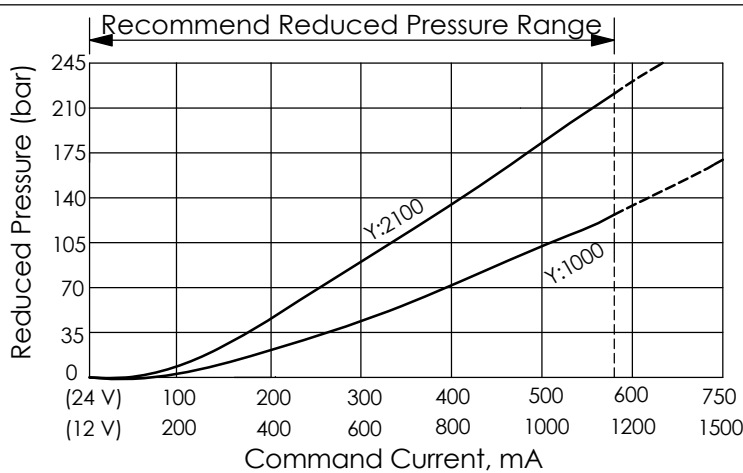
Repeatability (with dither) <2%

Hysteresis (with dither) <4%

Hysteresis with DC input <8%

Maximum valve leakage at 46 cSt = 40 cc/min.  
Leakage specified is out of port 3 with a supply pressure of 210 bar and the valve set at mid-range.

Weight: (with Coil) 0.49 kg  
(without Coil) 0.25 kg



### X OPERATION

**3D** 3 Ports · 22 Watt. Coil  
Ø 19 mm tube  
Recommend : The coil for proportional valve without VDR

### Y OPERATING RANGE

Y	Rated Pressure
<b>0350</b>	1~35 bar Maximum Differential=210 bar
<b>1000</b>	10~100 bar Maximum Differential=210 bar
<b>2100</b>	20~210 bar Maximum Differential=210 bar

When inlet pressure up to 210~350 bar  
Recommend : Keep "Reduced Pressure" (Port ①)  
minimum 30 bar to have best control.

### Z OPTIONS

<b>N</b>	Non-adjustable
<b>P</b>	Push Style Manual Override