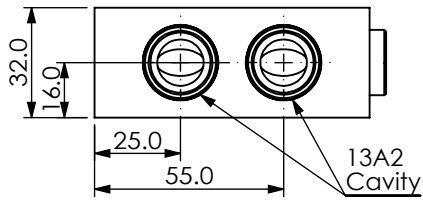
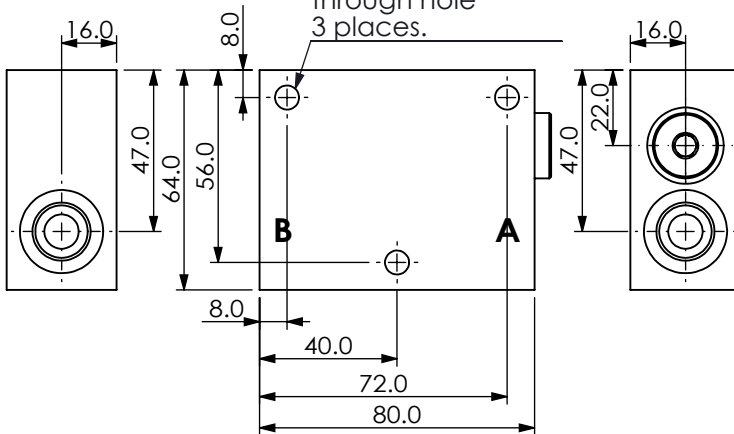


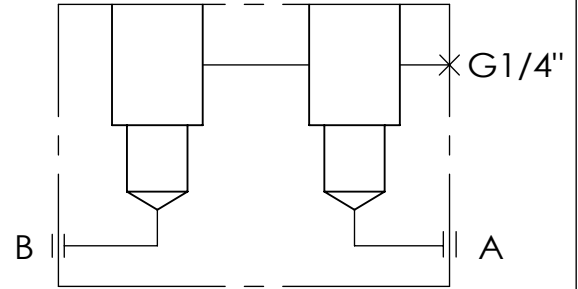
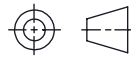
Ordering Code: **ML-30-FDR-X-Y-Z-A01**



Mounting Holes:
Ø 7.0mm. diameter
through hole
3 places.



UNIT:mm



TECHNICAL DATA

Aluminum Body Pressure Rating: 210 bar

Steel Body Pressure Rating: 350 bar

Cavity:

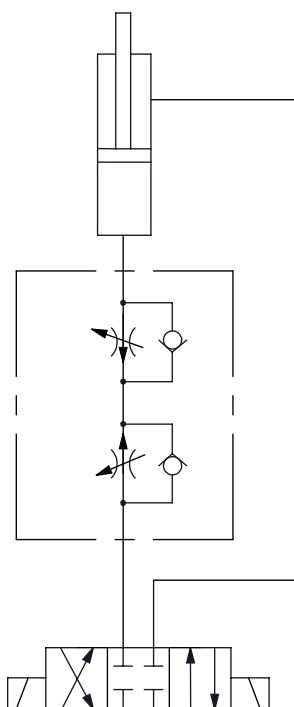
Refer to 13A2

* Refer to Winner Cartridge Valves Catalog.

Aluminum	0.36 kg(WITHOUT VALVES)
----------	-------------------------

* If you need the special specification.
Please contact us.

TYPICAL CIRCUIT:



X CARTRIDGE VALVES SELECTION

13A2	WITHOUT VALVE	
FR0A	FR13A20AL (23LPM,350bar)	

Y CARTRIDGE VALVES SELECTION

13A2	WITHOUT VALVE	
FR0A	FR13A20AL (23LPM,350bar)	

PORT SIZE

Z	PORT	PORT	
	A	B	
G03	G 3/8"	G 3/8"	