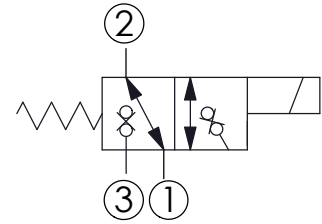
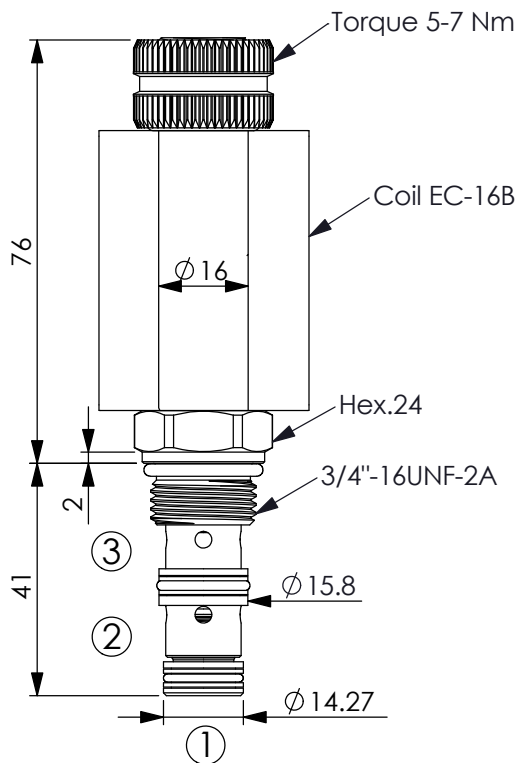


SOLENOID OPERATED VALVE

(Direct-Acting Poppet 3-Way 2-Position Cartridge Style)

Ordering Code: **EP-08W-X-Y-Z-04**



TECHNICAL DATA

Max. Operating pressure: 240 bar

Rated flow: 10 l/min

Response Time Opening 20-40 ms
(2 → 3, 2 → 1) Closing 50-90 ms

Cavity-Tooling: 08W-3

Installation torque: 39-51 Nm

Weight: 0.19 kg

Fluids-Temperatures: -40~120 °C

Internal Leakage: 0.15cc/minute
(3 drops/minute) max.at 240 bar

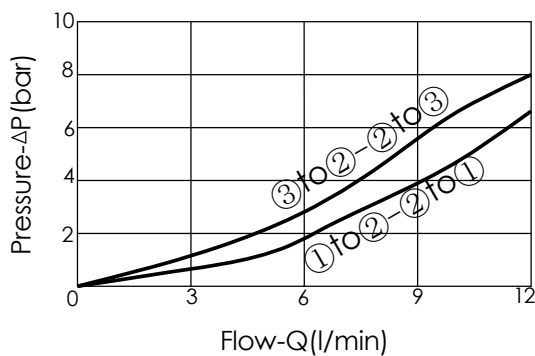
Filtration: 25 μm nominal or better

Minimum Voltage Required:
90 % of nominal

Coils must be ordered separately

Mounting Position: unrestricted

UNIT:mm



Y	OPERATION	
	53	Direct-Acting Poppet 3-Way 2-Position Cartridge Style

X	STRUCTURE	
3C	3 Ports · 26 Watt. Coil Ø 16 mm tube	

Z	OPTIONS	
N	Non-adjustable	
P	Push Style Manual Override	